

November 2022 Organization Chart



LORI WOLFF
ADMINISTRATOR

PAIGE LEATHAM
MANAGEMENT
ASSISTANT

HR FIELD OPERATIONS

**JANELLE
WHITE**
BUREAU CHIEF

DHR OPERATIONS & LUMA

**SHARON
DUNCAN**
HCM OPERATIONS
CHIEF

TRAINING & COMMUNICATION

**ANGELA
KRAFT-FISHER**
CHIEF
LEARNING
OFFICER

**CLAIRE
RUSSELL**
HR
ASSOCIATE

**HR FIELD
OPERATIONS**

**DHR POLICY
& PROGRAMS**

INVESTIGATIONS

**FISCAL &
CONTRACTS**

**CLASS
& COMP**

**LUMA &
PAYROLL**

TRAINING

COMMUNICATION

**ANDREA
RYAN**
HR MANAGER

VACANT
HR MANAGER

**MIKE
EVANS**
HR MANAGER

**MICHELLE
PEUGH**
POLICY &
PROGRAM
OFFICER

**HALEY
WESTENSKOW**
INVESTIGATIONS
MANAGER

**TARYN
ROSS**
HR UNIT
SUPERVISOR

**ASHLEY
MATTOON**
RECRUITMENT
MANAGER

**JANELLE
MCDONALD**
CIVIL RIGHTS/
ADA MANAGER

**COURTNEY
BUTLER**
OCC. HEALTH
MANAGER

**CHRIS
EISMANN**
HR
SPECIALIST

**BUDGET
REQUEST**
FINANCIAL
SPECIALIST
SENIOR FY 2024

**SHEENA
BUFFI**
COMPENSATION
MANAGER

**RACHEAL
HALL**
MANAGEMENT
ANALYST
SENIOR

**HANNA
HALL**
EMP. SVCS
MANAGER

**JANA
HUFFAKER**
CPM
MANAGER

**CARRIE
CLOUD**
CIRR. DEV.
MANAGER

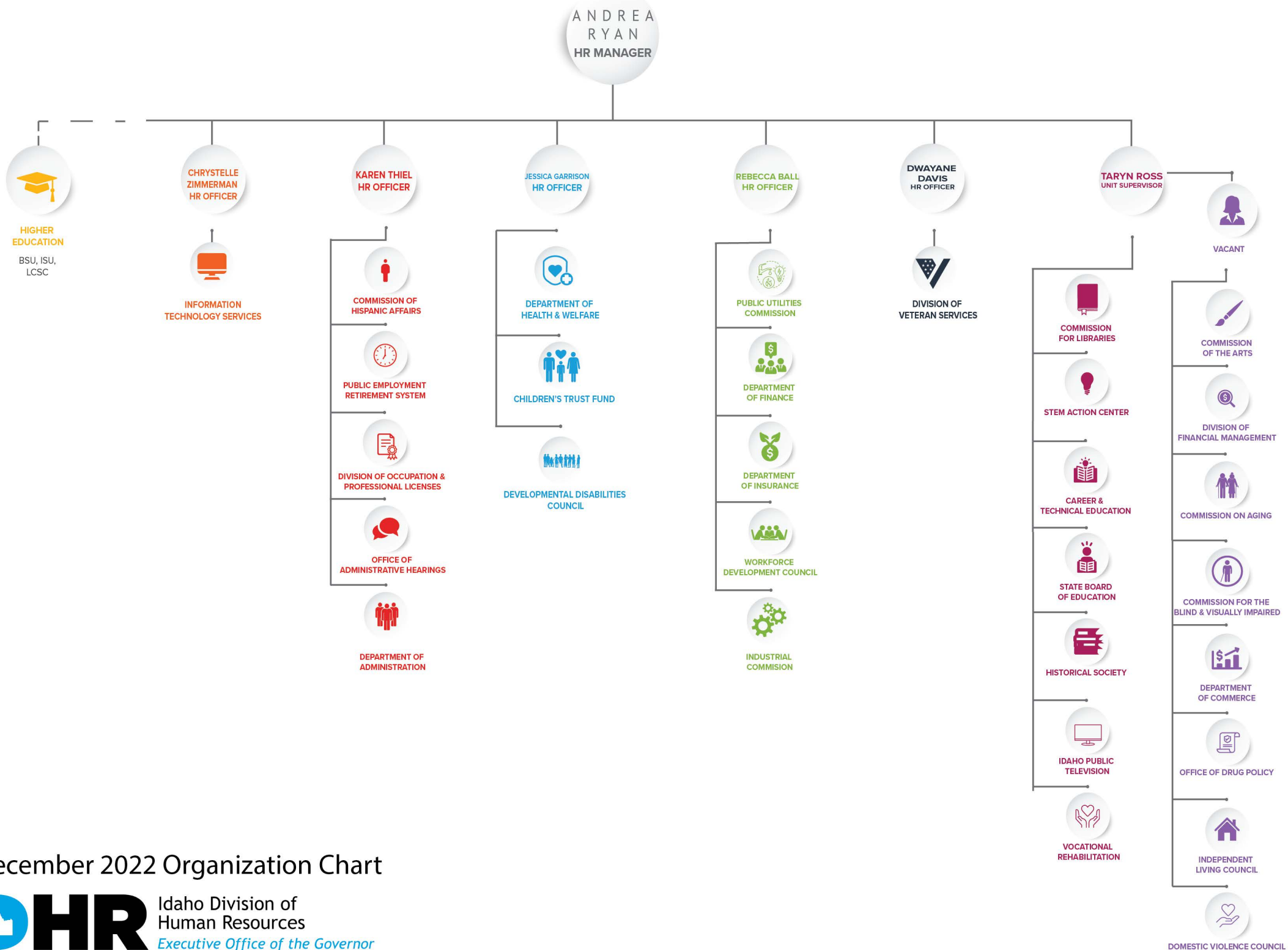
**FRANK
DECARVELO**
TRG & DEV
MANAGER

VACANT
TRAINING
SPECIALIST

**BRENNAN
SERRANO**
COMMUNICATIONS
MANAGER

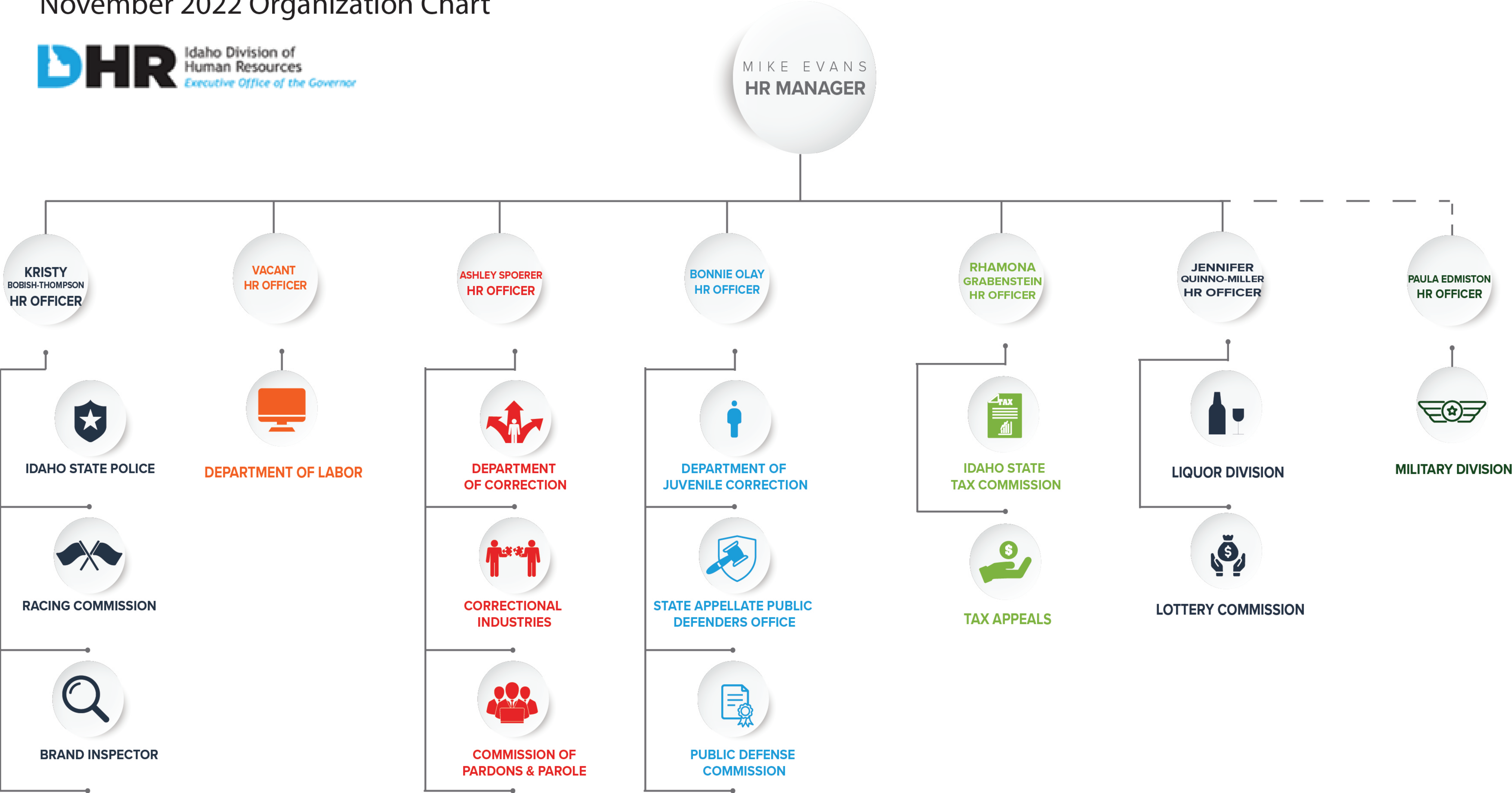
**PAUL
BENTLEY**
PERFORMANCE
DEV. SPECIALIST

**MICHAEL
TOWNE**
PERFORMANCE
DEV. SPECIALIST



December 2022 Organization Chart

November 2022 Organization Chart



November 2022 Organization Chart

